




Extrusion - metric  
Thread Forming - for sheet screws



Counter Sink - for metric screws  
Emboss Counter Sink - for metric screws



Louver (for Air-cooling)  
Continuous Louver (for Air-cooling)



Continuous Beading  
Continuous Offset / Continuous Bending




Dimple (for point welding)



Half shear



Letter Marking  
Ground Symbols



Round Emboss



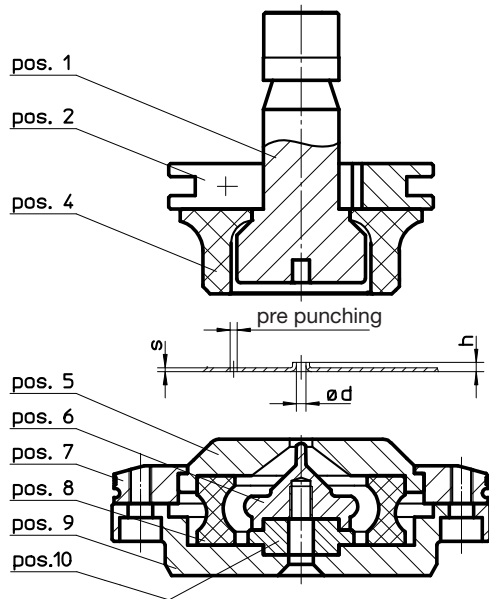
Hinge  
Card Guide



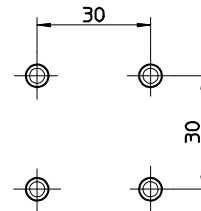


Am Steinkreuz 2  
D 95473 Creußen  
Phone: + 49 92 70 / 9 85 - 0  
Fax: + 49 92 70 / 9 85 - 99  
E-Mail: info@pass-ag.com  
Internet: www.pass-ag.com

### Extrusion Tool size II / spring-loaded version - upform -



minimum steps  
with standard-version



tool complete pos. 1-10	part.-no.	1910100.	add. part.-no. below	price:
die insert pos. 1	part.-no.	1910101.	add. part.-no. below	price:
punch pos. 6	part.-no.	1910106.	add. part.-no. below	price:
PU-spring pos. 4	part.-no.	1910104	no add. part.-no. necessary	price:
PU-spring pos. 8	part.-no.	1910108	no add. part.-no. necessary	price:
thread-forming	add. part.-no.	0F.		
thread-cutting	add. part.-no.	0S.		
M2,5	add. part.-no.	025.		
M3	add. part.-no.	030.		
M4	add. part.-no.	040.		
M5	add. part.-no.	050.		
M6	add. part.-no.	060.		
M8	add. part.-no.	080.		
s = 0,8	add. part.-no.	08.		
s = 1,0	add. part.-no.	10.		
s = 1,5	add. part.-no.	15.		
s = 2,0	add. part.-no.	20.		
s = 2,5	add. part.-no.	25.		
s = 3,0	add. part.-no.	30.		
Mild steel	add. part.-no.		ST	
Aluminium	add. part.-no.		AL	
Stainless steel	add. part.-no.		VA	
tool example:	part.-no.	1910100.	0F. 040. 10.	ST

complete  
tool  
thread-  
forming  
M4  
s = 1,0  
Mild steel

# Catalog 12/05-T

Extrusion Tool  
- downform

System

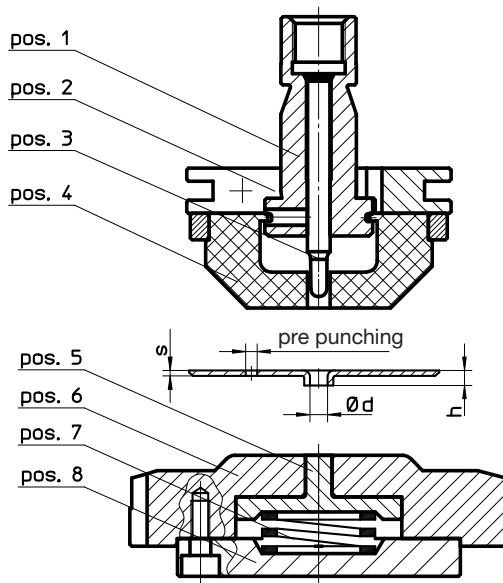
## TRUMPF

# PASS STANZTECHNIK AG

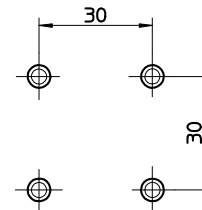


Am Steinkreuz 2  
D 95473 Creußen  
Phone: + 49 92 70 / 9 85 - 0  
Fax: + 49 92 70 / 9 85 - 99  
E-Mail: info@pass-ag.com  
Internet: www.pass-ag.com

### Extrusion Tool size II / spring-loaded version - downform -



minimum steps  
with standard-version



tool complete pos. 1-8	part.-no.	1910200.	add. part.-no. below	price:
punch insert pos. 3	part.-no.	1910203.	add. part.-no. below	price:
PU-spring incl. Ring pos. 4	part.-no.	1910204	no add. part.-no. necessary	price:
ejector pos. 5	part.-no.	1910205.	add. part.-no. below	price:
die pos. 6	part.-no.	1910206.	add. part.-no. below	price:
thread-forming	add. part.-no.	0F.		
thread-cutting	add. part.-no.	0S.		
M2,5	add. part.-no.	025.		
M3	add. part.-no.	030.		
M4	add. part.-no.	040.		
M5	add. part.-no.	050.		
M6	add. part.-no.	060.		
M8	add. part.-no.	080.		
s = 0,8	add. part.-no.	08.		
s = 1,0	add. part.-no.	10.		
s = 1,5	add. part.-no.	15.		
s = 2,0	add. part.-no.	20.		
s = 2,5	add. part.-no.	25.		
s = 3,0	add. part.-no.	30.		
Mild steel	add. part.-no.		ST	
Aluminium	add. part.-no.		AL	
Stainless steel	add. part.-no.		VA	
tool example:	part.-no.	1910200. 0S. 050. 10.	ST	

complete  
tool  
thread-  
cutting  
M5  
s = 1,0  
Mild steel

# Catalog 12/05-T

Thread Forming Tool  
for sheet-screws  
- upform

System

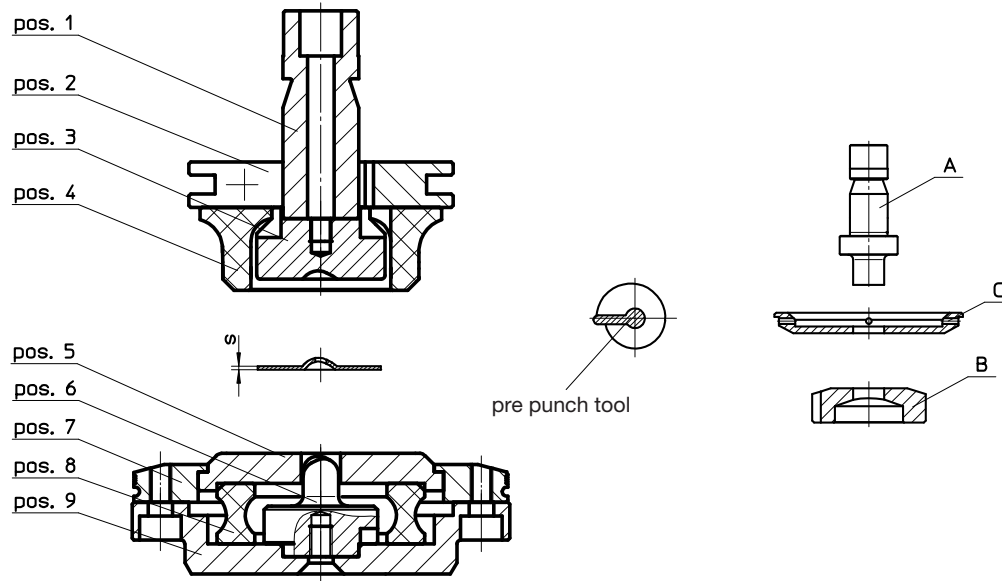
## TRUMPF

### PASS STANZTECHNIK AG



Am Steinkreuz 2  
D 95473 Creußen  
Phone: + 49 92 70 / 9 85 - 0  
Fax: + 49 92 70 / 9 85 - 99  
E-Mail: info@pass-ag.com  
Internet: www.pass-ag.com

#### Thread Forming Tool size II for sheet-screws / spring-loaded version - upform -



<b>tool complete pos.1-9</b>	<b>part.-no.</b>	<b>1911200.</b>	<b>add. part.-no. below</b>	<b>price:</b>
die insert pos. 3	part.-no.	1911203.	add. part.-no. below	price:
PU-spring pos. 4	part.-no.	1911204.	add. part.-no. below	price:
stripper pos. 5	part.-no.	1911205.	add. part.-no. below	price:
punch insert pos. 6	part.-no.	1911206.	add. part.-no. below	price:
PU-spring pos. 8	part.-no.	1911208	no add. part.-no. necessary	price:
<b>pre-punch tool complete pos. A-C</b>	<b>part.-no.</b>	<b>19112A0.</b>	<b>add. part.-no. below</b>	<b>price:</b>
punch pos. A	part.-no.	19112A1.	add. part.-no. below	price:
die pos. B	part.-no.	19112A2.	add. part.-no. below	price:
stripper pos. C	part.-no.	19112A3.	add. part.-no. below	price:
thread size 3,5	add. part.-no.	035.		
thread size 3,9	add. part.-no.	039.		
thread size 4,2	add. part.-no.	042.		
thread size 4,8	add. part.-no.	048.		
thread size 5,5	add. part.-no.	055.		
thread size 6,3	add. part.-no.	063.		
s = 0,5	add. part.-no.	05.		
s = 0,8	add. part.-no.	08.		
s = 1,0	add. part.-no.	10.		
s = 1,2	add. part.-no.	12.		
s = 1,5	add. part.-no.	15.		
Mild steel	add. part.-no.		ST	
Aluminium	add. part.-no.		AL	
Stainless steel	add. part.-no.		VA	
<b>tool example:</b>	<b>part.-no.</b>	<b>1911200. 042. 08. ST</b>		

complete  
tool  
sheet-screw  
4,2  
s = 0,8  
Mild steel

# Catalog 12/05-T

Thread Forming Tool  
for sheet-screws  
- downform

System

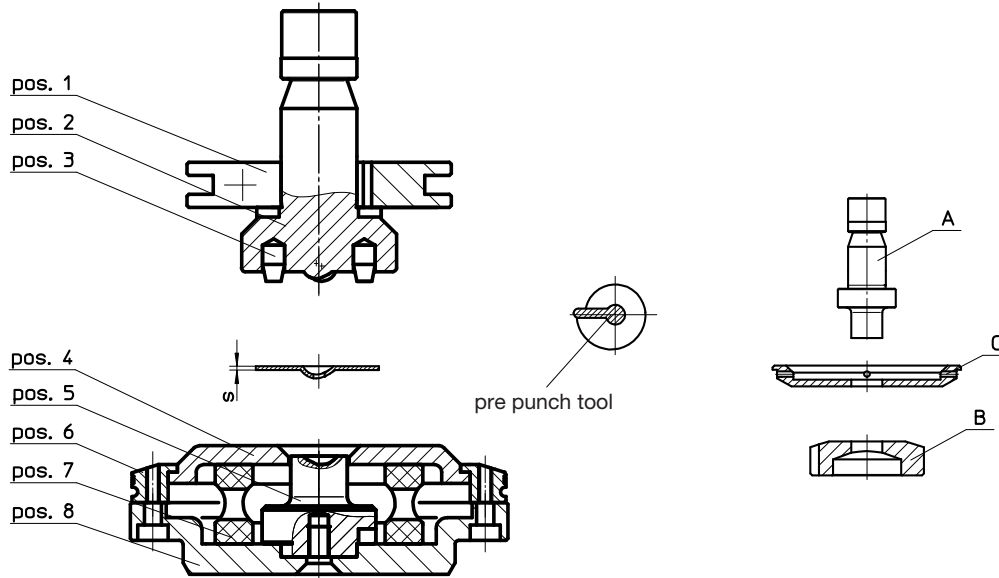
## TRUMPF

# PASS STANZTECHNIK AG



Am Steinkreuz 2  
D 95473 Creußen  
Phone: + 49 92 70 / 9 85 - 0  
Fax: + 49 92 70 / 9 85 - 99  
E-Mail: info@pass-ag.com  
Internet: www.pass-ag.com

### Thread Forming Tool size II for sheet-screws / spring- loaded version - downform -



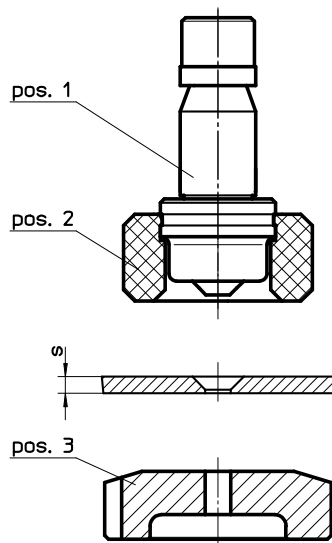
<b>tool complete pos.1-8</b>	<b>part.-no.</b>	<b>1912100.</b>	<b>add. part.-no. below</b>	<b>price:</b>
punch pos. 2	part.-no.	1912102.	add. part.-no. below	price:
PU-ejector pos. 3	part.-no.	1912103.	add. part.-no. below	price:
stripper pos. 4	part.-no.	1912104.	add. part.-no. below	price:
die insert pos. 5	part.-no.	1912105.	add. part.-no. below	price:
PU-spring pos. 7	part.-no.	1912107	no add. part.-no. necessary	price:
<b>pre-punch tool complete pos. A-C</b>	<b>part.-no.</b>	<b>19121A0.</b>	<b>add. part.-no. below</b>	<b>price:</b>
punch pos. A	part.-no.	19121A1.	add. part.-no. below	price:
die pos. B	part.-no.	19121A2.	add. part.-no. below	price:
stripper pos. C	part.-no.	19121A3.	add. part.-no. below	price:
thread size 3,5	add. part.-no.	035.		
thread size 3,9	add. part.-no.	039.		
thread size 4,2	add. part.-no.	042.		
thread size 4,8	add. part.-no.	048.		
thread size 5,5	add. part.-no.	055.		
thread size 6,3	add. part.-no.	063.		
s = 0,5	add. part.-no.	05.		
s = 0,8	add. part.-no.	08.		
s = 1,0	add. part.-no.	10.		
s = 1,2	add. part.-no.	12.		
s = 1,5	add. part.-no.	15.		
Mild steel	add. part.-no.		ST	
Aluminium	add. part.-no.		AL	
Stainless steel	add. part.-no.		VA	
tool example:	part.-no.	1912102. 055. 10.	VA	

punch  
sheet-screw  
5,5  
s = 1,0  
Stainless  
steel



Am Steinkreuz 2  
D 95473 Creußen  
Phone: + 49 92 70 / 9 85 - 0  
Fax: + 49 92 70 / 9 85 - 99  
E-Mail: info@pass-ag.com  
Internet: www.pass-ag.com

### Counter Sink Tool size I / solid version - downform -

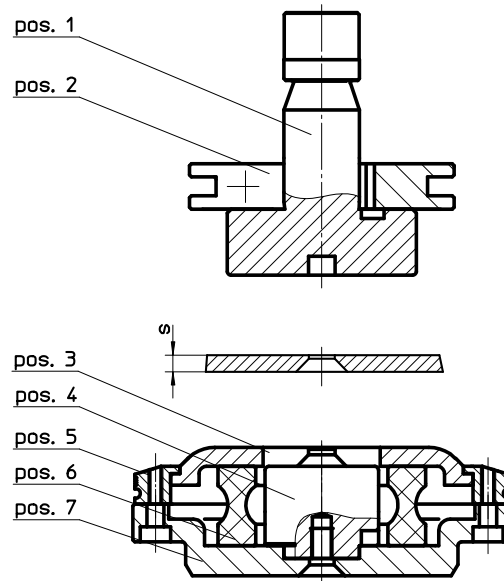


tool complete pos. 1-3	part.-no.	1910900.	add. part.-no. below	price:
counter sink punch pos. 1	part.-no.	1910901.	add. part.-no. below	price:
PU-spring pos. 2	part.-no.	1910902.	add. part.-no. below	price:
die pos. 3	part.-no.	1910903.	add. part.-no. below	price:
AM-shape	add. part.-no.	AM.		
BM-shape	add. part.-no.	BM.		
M2,5	add. part.-no.	025.		
M3	add. part.-no.	030.		
M4	add. part.-no.	040.		
M5	add. part.-no.	050.		
M6	add. part.-no.	060.		
M8	add. part.-no.	080.		
s = 0,8	add. part.-no.	08.		
s = 1,0	add. part.-no.	10.		
s = 1,5	add. part.-no.	15.		
s = 2,0	add. part.-no.	20.		
s = 2,5	add. part.-no.	25.		
s = 3,0	add. part.-no.	30.		
s = 4,0	add. part.-no.	40.		
Mild steel	add. part.-no.		ST	
Aluminium	add. part.-no.		AL	
Stainless steel	add. part.-no.		VA	
tool example:	part.-no.	1910900.	AM. 050. 40.	AL

complete  
tool  
AM-  
shape  
M5  
s = 4,0  
Aluminium



### Counter Sink Tool size II (spring-loaded version) - upform -



tool complete pos. 1-7	part.-no.	1911100.	add. part.-no. below	price:
die pos. 1	part.-no.	1911101.	add. part.-no. below	price:
stripper pos. 3	part.-no.	1911103.	add. part.-no. below	price:
punch insert pos. 4	part.-no.	1911104.	add. part.-no. below	price:
PU-spring pos. 6	part.-no.	1911106	no add. part.-no. necessary	price:
AM-shape	add. part.-no.	AM.		
BM-shape	add. part.-no.	BM.		
M2,5	add. part.-no.	025.		
M3	add. part.-no.	030.		
M4	add. part.-no.	040.		
M5	add. part.-no.	050.		
M6	add. part.-no.	060.		
M8	add. part.-no.	080.		
s = 0,8	add. part.-no.	08.		
s = 1,0	add. part.-no.	10.		
s = 1,5	add. part.-no.	15.		
s = 2,0	add. part.-no.	20.		
s = 2,5	add. part.-no.	25.		
s = 3,0	add. part.-no.	30.		
s = 4,0	add. part.-no.	40.		
Mild steel	add. part.-no.		ST	
Aluminium	add. part.-no.		AL	
Stainless steel	add. part.-no.		VA	
tool example:	part.-no.	1911100.	AM. 030. 20.	AL

complete  
tool  
AM-  
shape  
M3  
s = 2,0  
Aluminium

# Catalog 12/05-T

**Emboss Counter Sink Tool**  
**Tool**  
**- upform**

System

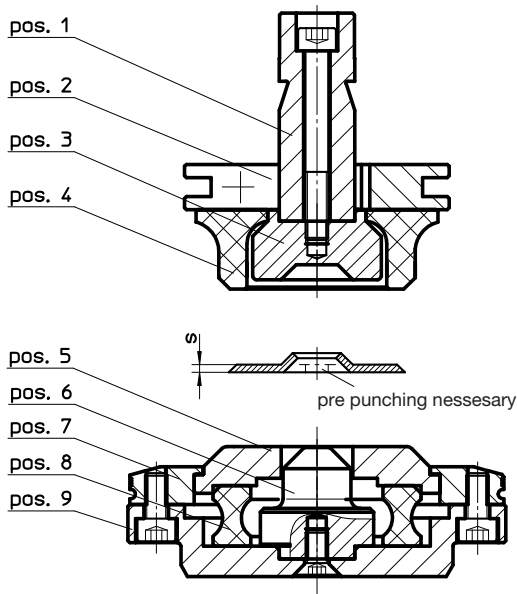
**TRUMPF**

**PASS STANZTECHNIK AG**

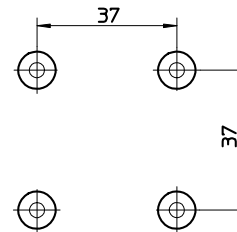


Am Steinkreuz 2  
 D 95473 Creußen  
 Phone: + 49 92 70 / 9 85 - 0  
 Fax: + 49 92 70 / 9 85 - 99  
 E-Mail: info@pass-ag.com  
 Internet: www.pass-ag.com

**Emboss Counter Sink Tool size II / spring-loaded version**  
**- upform -**



minimum steps  
with standard-version



tool complete pos. 1-9	part.-no.	1911700.	add. part.-no. below	price:
die insert pos. 3	part.-no.	1911703.	add. part.-no. below	price:
PU-spring pos. 4	part.-no.	1911704.	add. part.-no. below	price:
stripper pos. 5	part.-no.	1911705.	add. part.-no. below	price:
punch insert pos. 6	part.-no.	1911706.	add. part.-no. below	price:
PU-spring pos. 8	part.-no.	1911708	no add. part.-no. necessary	price:
M2,5	add. part.-no.	025.		
M3	add. part.-no.	030.		
M4	add. part.-no.	040.		
M5	add. part.-no.	050.		
M6	add. part.-no.	060.		
M8	add. part.-no.	080.		
M10	add. part.-no.	100.		
s = 0,8	add. part.-no.	08.		
s = 1,0	add. part.-no.	10.		
s = 1,5	add. part.-no.	15.		
s = 2,0	add. part.-no.	20.		
s = 2,5	add. part.-no.	25.		
s = 3,0	add. part.-no.	30.		
Mild steel	add. part.-no.		ST	
Aluminium	add. part.-no.		AL	
Stainless steel	add. part.-no.		VA	
tool example:	part.-no.	1911708		

PU-spring



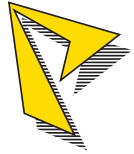
# Catalog 12/05-T

Emboss Counter Sink  
Tool  
- downform

System

## TRUMPF

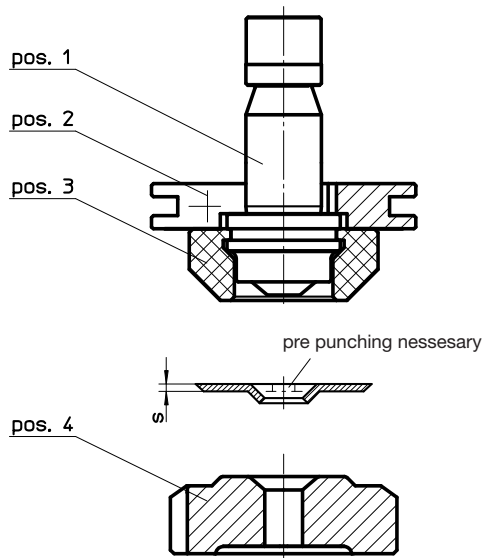
# PASS STANZTECHNIK AG



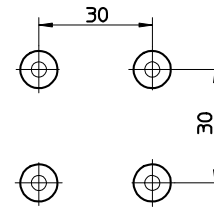
Am Steinkreuz 2  
D 95473 Creußen  
Phone: + 49 92 70 / 9 85 - 0  
Fax: + 49 92 70 / 9 85 - 99  
E-Mail: info@pass-ag.com  
Internet: www.pass-ag.com



### Emboss Counter Sink Tool size II / solid version - downform -



minimum steps  
with standard-version



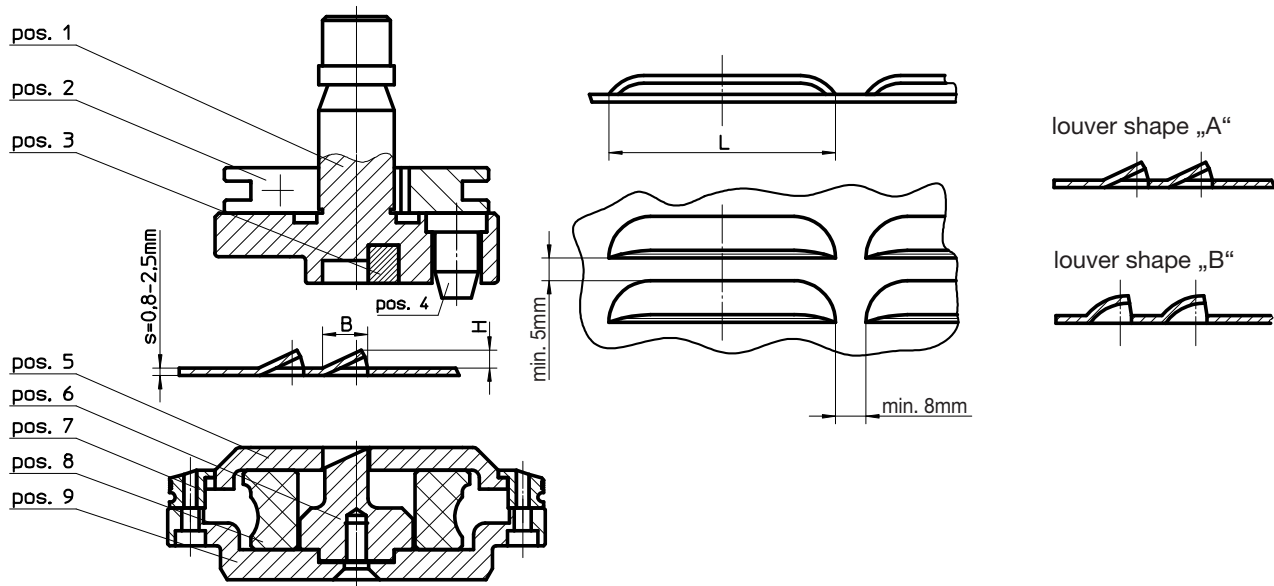
tool complete pos. 1-4	part.-no.	191800.	add. part.-no. below	price:
punch pos. 1	part.-no.	191801.	add. part.-no. below	price:
PU-spring pos. 3	part.-no.	191803.	add. part.-no. below	price:
die pos. 4	part.-no.	191804.	add. part.-no. below	price:
M2,5	add. part.-no.	025.		
M3	add. part.-no.	030.		
M4	add. part.-no.	040.		
M5	add. part.-no.	050.		
M6	add. part.-no.	060.		
M8	add. part.-no.	080.		
M10	add. part.-no.	100.		
s = 0,8	add. part.-no.	08.		
s = 1,0	add. part.-no.	10.		
s = 1,5	add. part.-no.	15.		
s = 2,0	add. part.-no.	20.		
s = 2,5	add. part.-no.	25.		
s = 3,0	add. part.-no.	30.		
Mild steel	add. part.-no.		ST	
Aluminium	add. part.-no.		AL	
Stainless steel	add. part.-no.		VA	
tool example:	part.-no.	191801.	030. 20.	ST

countersink-  
punch  
M3  
s = 2,0  
Mild steel



Am Steinkreuz 2  
D 95473 Creußen  
Phone: + 49 92 70 / 9 85 - 0  
Fax: + 49 92 70 / 9 85 - 99  
E-Mail: info@pass-ag.com  
Internet: www.pass-ag.com

**Louver Tool size II for s = 0,8 - 2,5 mm / spring-loaded version  
- upform -**



tool complete pos. 1-9	part.-no.	1912200.	add. part.-no. below	price:
upper die pos. 1	part.-no.	1912201.	add. part.-no. below	price:
cutting blade pos. 3	part.-no.	1912203.	add. part.-no. below	price:
PU-ejector pos. 4	part.-no.	1912204	no add. part.-no. necessary	price:
stripper pos. 5	part.-no.	1912205.	add. part.-no. below	price:
punch insert pos. 6	part.-no.	1912206.	add. part.-no. below	price:
PU-spring pos. 8	part.-no.	1912208	no add. part.-no. necessary	price:
Louver shape "A"	add. part.-no.	A.		
Louver shape "B"	add. part.-no.	B.		
B = 8 / H = 3	add. part.-no.	083.		
B = 10 / H = 4	add. part.-no.	104.		
B = 12 / H = 5	add. part.-no.	125.		
B = 15 / H = 6	add. part.-no.	156.		
L = 40	add. part.-no.	40.		
L = 50	add. part.-no.	50.		
L = 60	add. part.-no.	60.		
Mild steel	add. part.-no.		ST	
Aluminium	add. part.-no.		AL	
Stainless steel	add. part.-no.		VA	
tool example:	part.-no.	1912200.	A. 125. 60. ST	

tool complete  
Louvershape  
"A"  
B = 12 / H = 5  
L = 60  
Mild steel

# Catalog 12/05-T

Louver Tool  
- downform

System

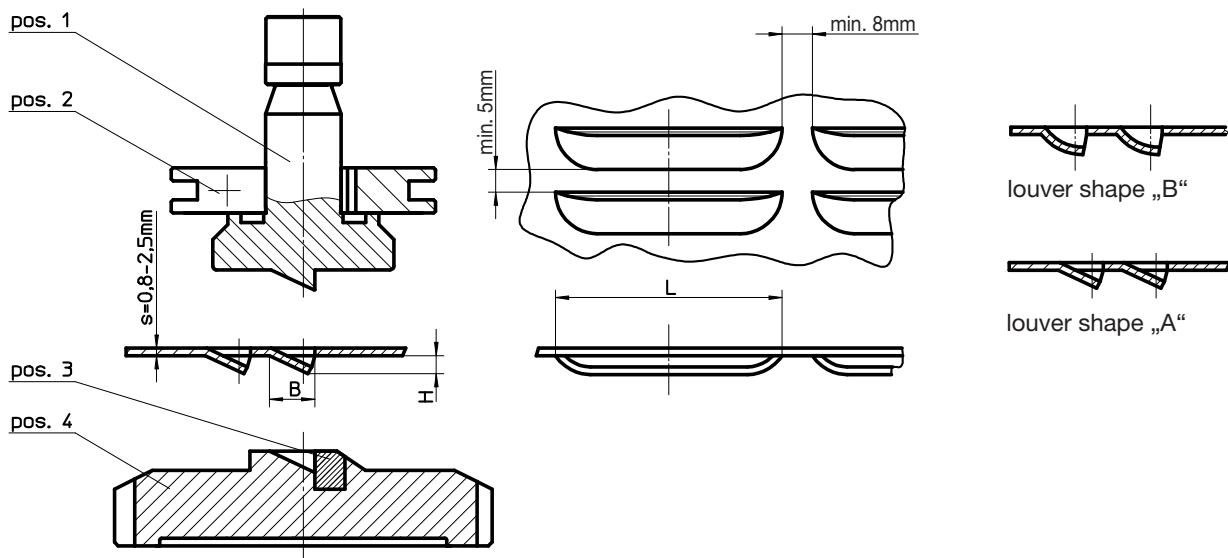
## TRUMPF

# PASS STANZTECHNIK AG



Am Steinkreuz 2  
D 95473 Creußen  
Phone: + 49 92 70 / 9 85 - 0  
Fax: + 49 92 70 / 9 85 - 99  
E-Mail: info@pass-ag.com  
Internet: www.pass-ag.com

### Louver Tool size II for $s = 0,8 - 2,5 \text{ mm}$ / solid version - downform -



tool complete pos. 1-4	part.-no.	1912300.	add. part.-no. below	price:
punch pos. 1	part.-no.	1912301.	add. part.-no. below	price:
cutting blade pos. 3	part.-no.	1912303.	add. part.-no. below	price:
die pos. 4	part.-no.	1912304.	add. part.-no. below	price:
Louver shape "A"	add. part.-no.	A.		
Louver shape "B"	add. part.-no.	B.		
B = 8 / H = 3	add. part.-no.	083.		
B = 10 / H = 4	add. part.-no.	104.		
B = 12 / H = 5	add. part.-no.	125.		
B = 15 / H = 6	add. part.-no.	156.		
L = 40	add. part.-no.	40.		
L = 50	add. part.-no.	50.		
L = 60	add. part.-no.	60.		
Mild steel	add. part.-no.		ST	
Aluminium	add. part.-no.		AL	
Stainless steel	add. part.-no.		VA	
tool example:	part.-no.	1912300.	B. 083. 40.	

tool complete  
Louver shape  
"B"  
B = 8 / H = 3  
L = 40  
all sheet  
versions

Catalog 12/05-T  
 Continuous Louver Tool  
 - upform

System

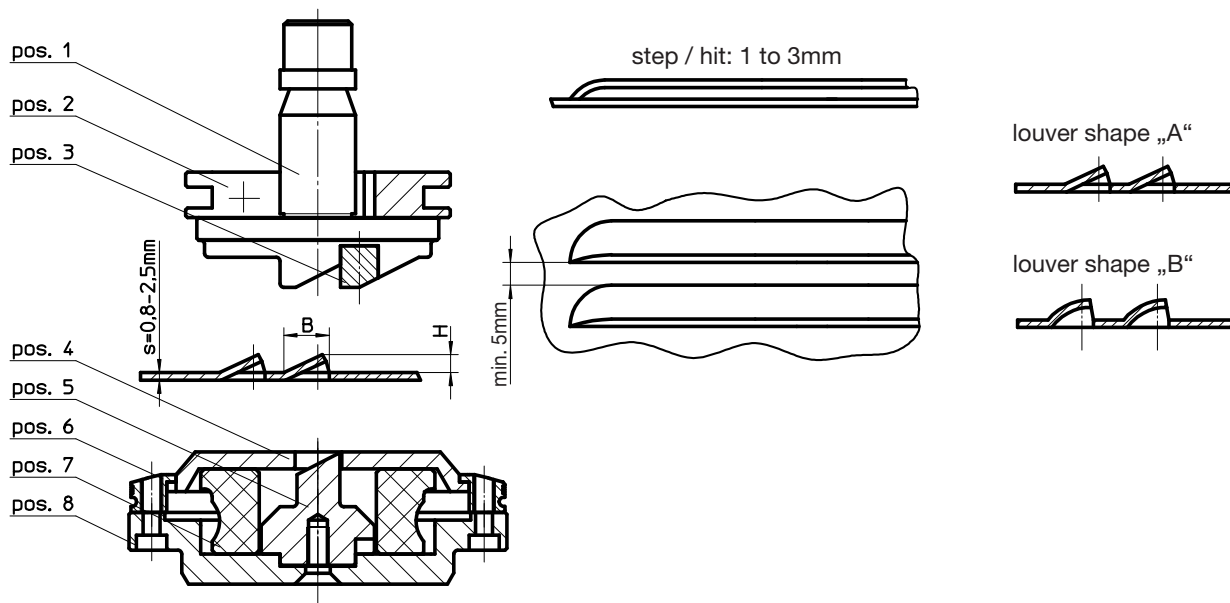
**TRUMPF**

**PASS STANZTECHNIK AG**



Am Steinkreuz 2  
 D 95473 Creußen  
 Phone: + 49 92 70 / 9 85 - 0  
 Fax: + 49 92 70 / 9 85 - 99  
 E-Mail: info@pass-ag.com  
 Internet: www.pass-ag.com

**Continuous Louver Tool size II for s = 0,8 - 2,5 mm / spring-loaded version  
 - upform -**



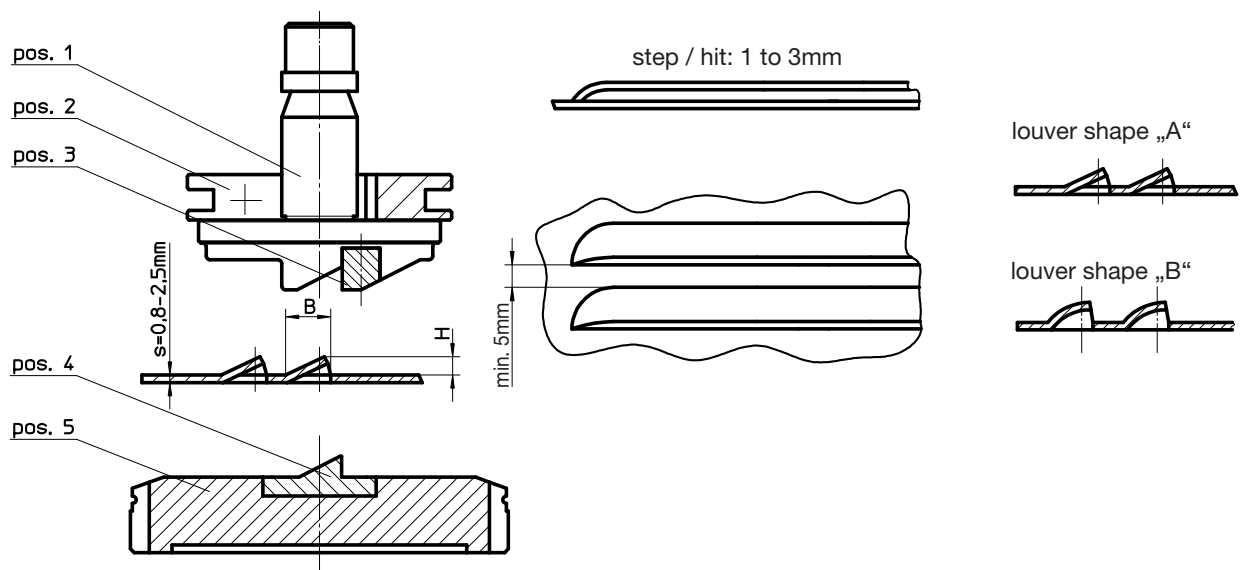
tool complete pos. 1-8	part.-no.	1912400.	add. part.-no. below	price:
upper die pos. 1	part.-no.	1912401.	add. part.-no. below	price:
cutting blade pos. 3	part.-no.	1912403.	add. part.-no. below	price:
stripper pos. 4	part.-no.	1912404.	add. part.-no. below	price:
punch insert pos. 5	part.-no.	1912405.	add. part.-no. below	price:
PU-spring pos. 7	part.-no.	1912407	no add. part.-no. necessary	price:
Louver shape "A"	add. part.-no.	A.		
Louver shape "B"	add. part.-no.	B.		
B = 8 / H = 3	add. part.-no.	083.		
B = 10 / H = 4	add. part.-no.	104.		
B = 12 / H = 5	add. part.-no.	125.		
Mild steel	add. part.-no.		ST	
Aluminium	add. part.-no.		AL	
Stainless steel	add. part.-no.		VA	
tool example:	part.-no.	1912403.	A. 125.	ST
	cutting blade		Louver shape "A"	
			B = 12 / H = 5	
			Mild steel	



Am Steinkreuz 2  
 D 95473 Creußen  
 Phone: + 49 92 70 / 9 85 - 0  
 Fax: + 49 92 70 / 9 85 - 99  
 E-Mail: info@pass-ag.com  
 Internet: www.pass-ag.com

System  
**TRUMPF**

**Continuous Louver Tool size II for s = 0,8 - 2,5 mm / solid version  
 - upform -**

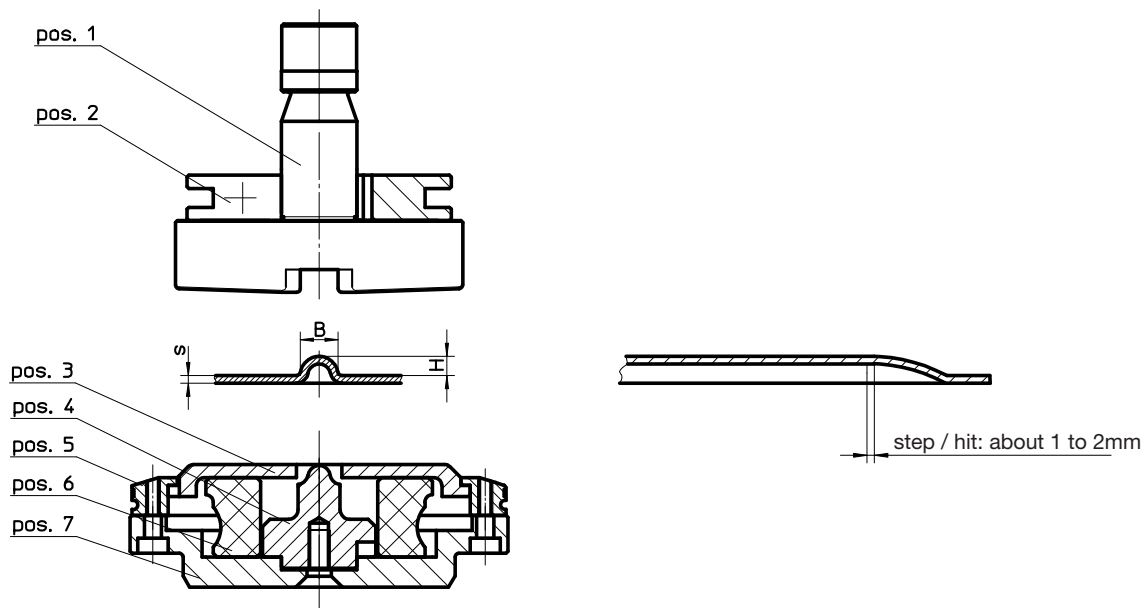


tool complete pos. 1-5	part.-no.	1912500.	add. part.-no. below	price:
upper die pos. 1	part.-no.	1912501.	add. part.-no. below	price:
cutting blade pos. 3	part.-no.	1912503.	add. part.-no. below	price:
punch insert pos. 4	part.-no.	1912504.	add. part.-no. below	price:
adapter pos. 5	part.-no.	1912505	no add. part.-no. necessary	price:
Louver shape "A"	add. part.-no.	A.		
Louver shape "B"	add. part.-no.	B.		
B = 8 / H = 3	add. part.-no.	083.		
B = 10 / H = 4	add. part.-no.	104.		
B = 12 / H = 5	add. part.-no.	125.		
Mild steel	add. part.-no.		ST	
Aluminium	add. part.-no.		AL	
Stainless steel	add. part.-no.		VA	
tool example:	part.-no.	1912500.	A. 125.	

tool complete  
 Louver shape "A"  
 B = 12 / H = 5  
 all sheet  
 versions



**Continuous Beading Tool size II / spring-loaded version  
 - upform -**



tool complete pos. 1-7	part.-no.	1912600.	add. part.-no. below	price:
upper die pos.1	part.-no.	1912601.	add. part.-no. below	price:
stripper pos. 3	part.-no.	1912603.	add. part.-no. below	price:
punch insert pos. 4	part.-no.	1912604.	add. part.-no. below	price:
PU-spring pos. 6	part.-no.	1912606	no add. part.-no. necessary	price:
B = 4 / H = 2	add. part.-no.	042.		
B = 6 / H = 3	add. part.-no.	063.		
B = 8 / H = 4	add. part.-no.	084.		
B = 10 / H = 5	add. part.-no.	105.		
s = 0,8	add. part.-no.	08.		
s = 1,0	add. part.-no.	10.		
s = 1,5	add. part.-no.	15.		
s = 2,0	add. part.-no.	20.		
s = 2,5	add. part.-no.	25.		
s = 3,0	add. part.-no.	30.		
Mild steel	add. part.-no.		ST	
Aluminium	add. part.-no.		AL	
Stainless steel	add. part.-no.		VA	
tool example:	part.-no.	1912600.	105. 10. VA	

tool complete  
 B = 10 / H = 5  
 s = 1,0  
 Stainless steel

# Catalog 12/05-T

Continuous Beading Tool  
- upform

System

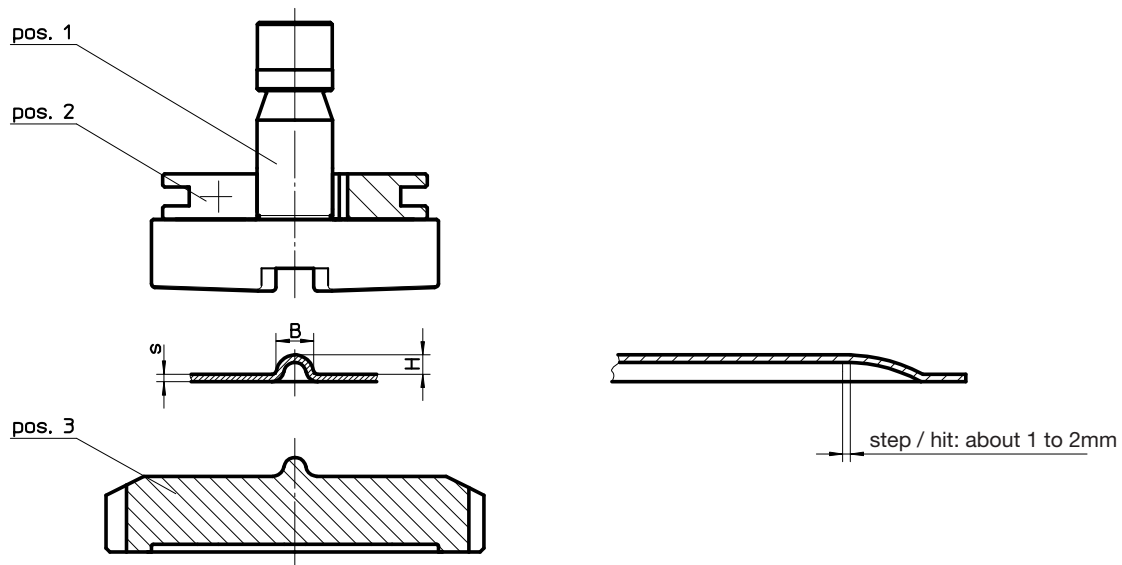
## TRUMPF

### PASS STANZTECHNIK AG



Am Steinkreuz 2  
D 95473 Creußen  
Phone: + 49 92 70 / 9 85 - 0  
Fax: + 49 92 70 / 9 85 - 99  
E-Mail: info@pass-ag.com  
Internet: www.pass-ag.com

#### Continuous Beading Tool size II / solid version - upform -



tool complete pos. 1-3	part.-no.	1912700.	add. part.-no. below	price:
upper die pos. 1	part.-no.	1912701.	add. part.-no. below	price:
lower punch pos. 3	part.-no.	1912703.	add. part.-no. below	price:
B = 4 / H = 2	add. part.-no.	042.		
B = 6 / H = 3	add. part.-no.	063.		
B = 8 / H = 4	add. part.-no.	084.		
B = 10 / H = 5	add. part.-no.	105.		
s = 0,8	add. part.-no.	08.		
s = 1,0	add. part.-no.	10.		
s = 1,5	add. part.-no.	15.		
s = 2,0	add. part.-no.	20.		
s = 2,5	add. part.-no.	25.		
s = 3,0	add. part.-no.	30.		
Mild steel	add. part.-no.		ST	
Aluminium	add. part.-no.		AL	
Stainless steel	add. part.-no.		VA	
tool example:	part.-no.	1912700. 063. 15.	ST	

tool complete  
B = 6 / H = 3  
s = 1,5  
Mild steel

# Catalog 12/05-T

Continuous Offset Tool  
- up- and downform

System

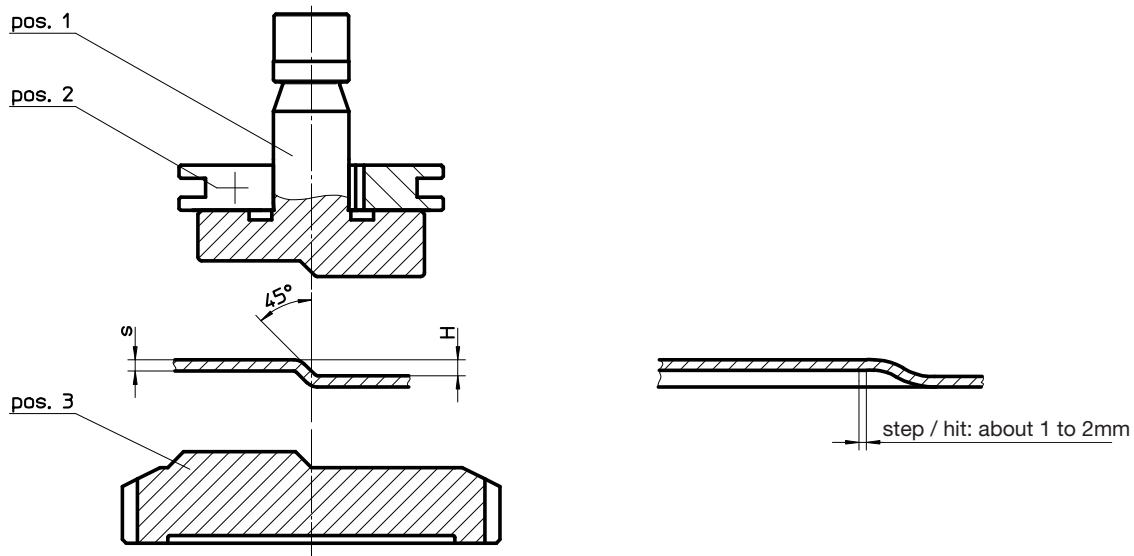
## TRUMPF

### PASS STANZTECHNIK AG



Am Steinkreuz 2  
D 95473 Creußen  
Phone: + 49 92 70 / 9 85 - 0  
Fax: + 49 92 70 / 9 85 - 99  
E-Mail: info@pass-ag.com  
Internet: www.pass-ag.com

### Continuous Offset Tool size II / solid version - upform and downform -



tool complete pos. 1-3	part.-no.	1912800.	add. part.-no. below	price:
upper part pos. 1	part.-no.	1912801.	add. part.-no. below	price:
lower part pos. 3	part.-no.	1912803.	add. part.-no. below	price:
H = 1,0	add. part.-no.	010.		
H = 1,5	add. part.-no.	015.		
H = 2,0	add. part.-no.	020.		
H = 2,5	add. part.-no.	025.		
H = 3,0	add. part.-no.	030.		
H = 4,0	add. part.-no.	040.		
H = 5,0	add. part.-no.	050.		
s = 0,8	add. part.-no.		08.	
s = 1,0	add. part.-no.		10.	
s = 1,5	add. part.-no.		15.	
s = 2,0	add. part.-no.		20.	
s = 2,5	add. part.-no.		25.	
s = 3,0	add. part.-no.		30.	
Mild steel	add. part.-no.		ST	
Aluminium	add. part.-no.		AL	
Stainless steel	add. part.-no.		VA	

tool example: part.-no. 1912800. 030. 15. AL

tool complete

H = 3,0

s = 1,5

Aluminium



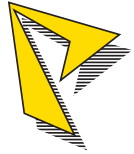
# Catalog 12/05-T

Continuous Bending Tool  
- upform

System

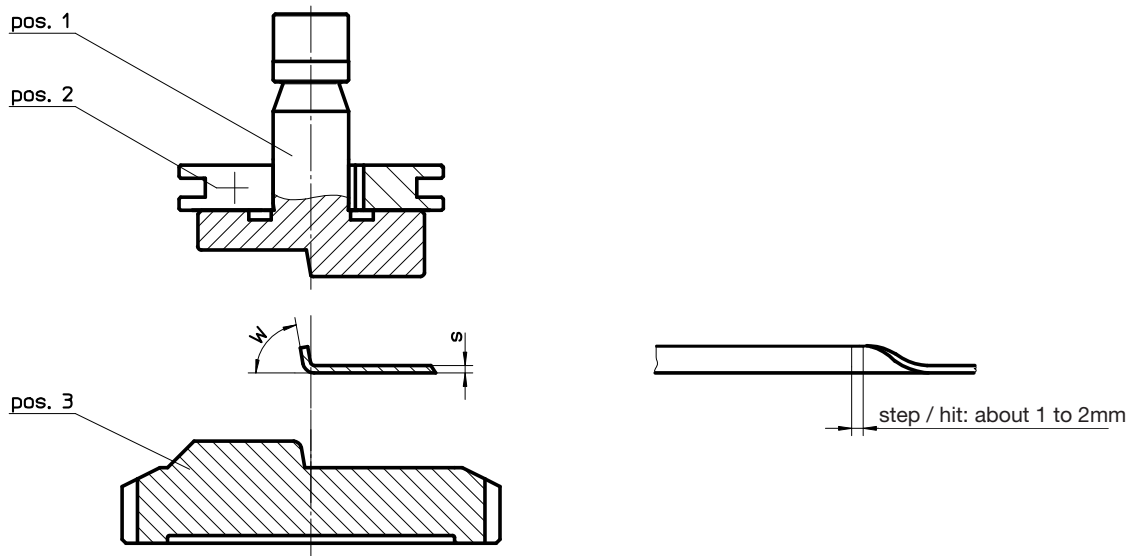
## TRUMPF

### PASS STANZTECHNIK AG



Am Steinkreuz 2  
D 95473 Creußen  
Phone: + 49 92 70 / 9 85 - 0  
Fax: + 49 92 70 / 9 85 - 99  
E-Mail: info@pass-ag.com  
Internet: www.pass-ag.com

#### Continuous Bending Tool size II / solid version - upform -



tool complete pos. 1-3	part.-no.	1912900.	add. part.-no. below	price:
upper die pos. 1	part.-no.	1912901.	add. part.-no. below	price:
lower punch pos. 3	part.-no.	1912903.	add. part.-no. below	price:
W = 30°	add. part.-no.	030.		
W = 45°	add. part.-no.	045.		
W = 60°	add. part.-no.	060.		
W = 80°	add. part.-no.	080.		
s = 0,8	add. part.-no.		08.	
s = 1,0	add. part.-no.		10.	
s = 1,5	add. part.-no.		15.	
s = 2,0	add. part.-no.		20.	
Mild steel	add. part.-no.		ST	
Aluminium	add. part.-no.		AL	
Stainless steel	add. part.-no.		VA	

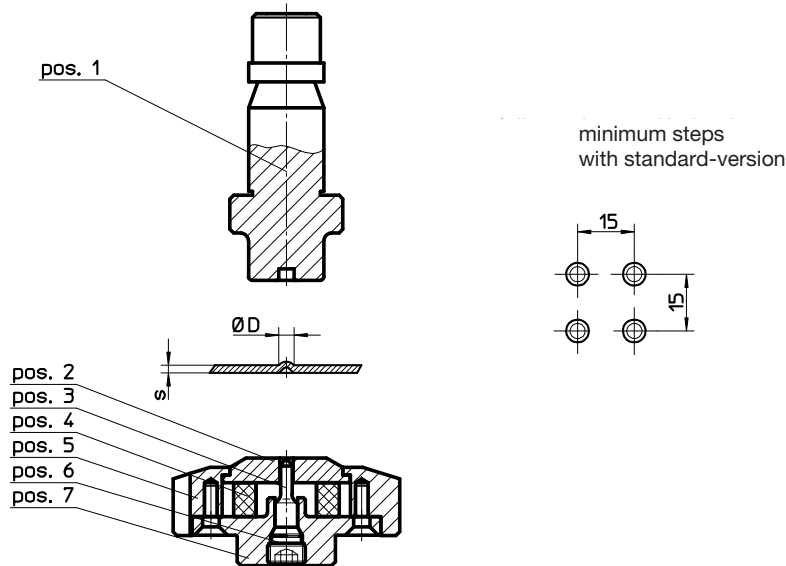
tool example: part.-no. 1912900. 060. 10. ST

tool complete  
W = 60°  
s = 1,0  
Mild steel



Am Steinkreuz 2  
D 95473 Creußen  
Phone: + 49 92 70 / 9 85 - 0  
Fax: + 49 92 70 / 9 85 - 99  
E-Mail: info@pass-ag.com  
Internet: www.pass-ag.com

### Standard Dimple Tool size I / spring-loaded version (for point welding) - upform -



tool complete pos. 1-7	part.-no.	1911300.	add. part.-no. below	price:
upper die pos. 1	part.-no.	1911301.	add. part.-no. below	price:
stripper pos. 2	part.-no.	1911302.	add. part.-no. below	price:
punch insert pos. 3	part.-no.	1911303.	add. part.-no. below	price:
PU-spring pos. 4	part.-no.	1911304	no add. part.-no. necessary	price:
D = 1,6	add. part.-no.	016.		
D = 2,0	add. part.-no.	020.		
D = 2,5	add. part.-no.	025.		
D = 3,0	add. part.-no.	030.		
D = 3,2	add. part.-no.	032.		
D = 4,0	add. part.-no.	040.		
D = 5,0	add. part.-no.	050.		
D = 5,6	add. part.-no.	056.		
D = 6,0	add. part.-no.	060.		
s = 0,63	add. part.-no.		063.	
s = 0,8	add. part.-no.		080.	
s = 1,0	add. part.-no.		100.	
s = 1,5	add. part.-no.		150.	
s = 2,0	add. part.-no.		200.	
s = 2,5	add. part.-no.		250.	
s = 3,0	add. part.-no.		300.	
Mild steel	add. part.-no.		ST	
Aluminium	add. part.-no.		AL	
Stainless steel	add. part.-no.		VA	

tool example: part.-no. 1911301. 040. 200. VA

upper die  
D = 4,0  
s = 2,0  
Stainless steel

# Catalog 12/05-T

Standard Dimple Tool  
- downform

System

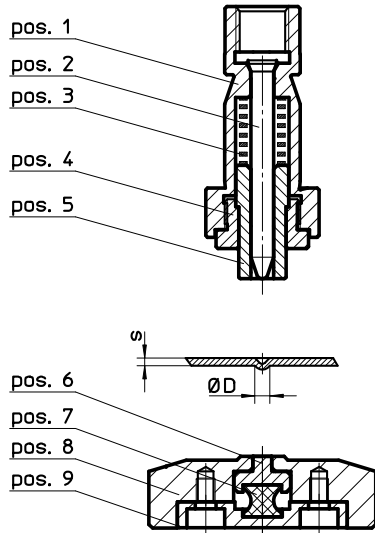
# TRUMPF

## PASS STANZTECHNIK AG

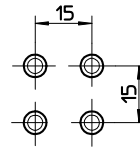


Am Steinkreuz 2  
D 95473 Creußen  
Phone: + 49 92 70 / 9 85 - 0  
Fax: + 49 92 70 / 9 85 - 99  
E-Mail: info@pass-ag.com  
Internet: www.pass-ag.com

### Standard Dimple Tool size I / spring-loaded version (for point welding) - downform -



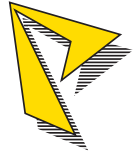
minimum steps  
with standard-version



tool complete pos. 1-9	part.-no.	1911400.	add. part.-no. below	price:
punch insert pos. 2	part.-no.	1911402.	add. part.-no. below	price:
spring pos. 3	part.-no.	1911403	no add. part.-no. necessary	price:
stripper pos. 5	part.-no.	1911405.	add. part.-no. below	price:
ejector pos. 6	part.-no.	1911406.	add. part.-no. below	price:
PU-spring pos. 7	part.-no.	1911407.	add. part.-no. below	price:
die pos. 8	part.-no.	1911408.	add. part.-no. below	price:
D = 1,6	add. part.-no.	016.		
D = 2,0	add. part.-no.	020.		
D = 2,5	add. part.-no.	025.		
D = 3,0	add. part.-no.	030.		
D = 3,2	add. part.-no.	032.		
D = 4,0	add. part.-no.	040.		
D = 5,0	add. part.-no.	050.		
D = 5,6	add. part.-no.	056.		
D = 6,0	add. part.-no.	060.		
s = 0,63	add. part.-no.	063.		
s = 0,8	add. part.-no.	080.		
s = 1,0	add. part.-no.	100.		
s = 1,5	add. part.-no.	150.		
s = 2,0	add. part.-no.	200.		
s = 2,5	add. part.-no.	250.		
s = 3,0	add. part.-no.	300.		
Mild steel	add. part.-no.		ST	
Aluminium	add. part.-no.		AL	
Stainless steel	add. part.-no.		VA	

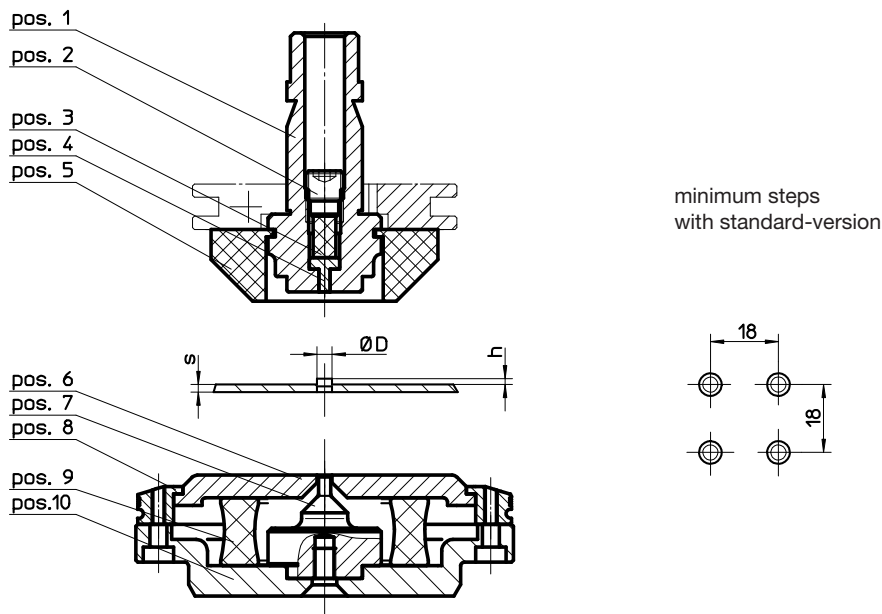
tool example: part.-no. 1911400. 030. 100. AL

tool complete  
D = 3,0  
s = 1,0  
Aluminium



Am Steinkreuz 2  
D 95473 Creußen  
Phone: + 49 92 70 / 9 85 - 0  
Fax: + 49 92 70 / 9 85 - 99  
E-Mail: info@pass-ag.com  
Internet: www.pass-ag.com

### Half Shear Tool size II / spring-loaded version (until s = 3,0mm) - upform -



tool complete pos. 1-10	part.-no.	1911500.	add. part.-no. below	price:
upper die pos. 1	part.-no.	1911501.	add. part.-no. below	price:
spring pos. 3	part.-no.	1911503	no add. part.-no. necessary	price:
PU-spring pos. 5	part.-no.	1911505.	add. part.-no. below	price:
stripper pos. 6	part.-no.	1911506.	add. part.-no. below	price:
punch insert pos. 7	part.-no.	1911507.	add. part.-no. below	price:
PU-spring pos. 8	part.-no.	1911508	no add. part.-no. necessary	price:
D = 2,0	add. part.-no.	020.		
D = 3,0	add. part.-no.	030.		
D = 4,0	add. part.-no.	040.		
D = 5,0	add. part.-no.	050.		
D = 6,0	add. part.-no.	060.		
Mild steel	add. part.-no.		ST	
Aluminium	add. part.-no.		AL	
Stainless steel	add. part.-no.		VA	
tool example:	part.-no.	1911500.	020.	ST

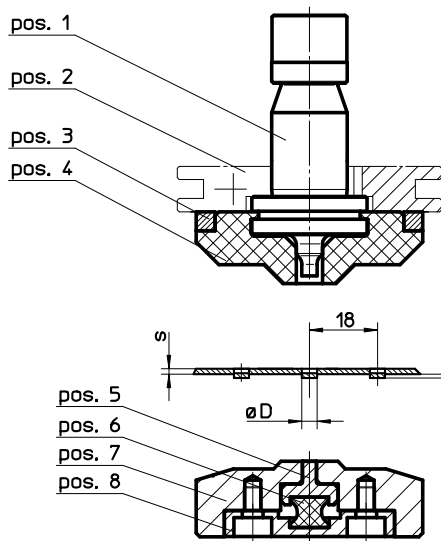
tool complete

D = 2,0

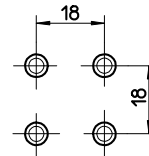
Mild steel



**Half Shear Tool size II / spring-loaded version (until s = 3,0mm)  
- downform -**



minimum steps  
with standard-version



tool complete pos.1-8	part.-no.	1911600.	add. part.-no. below	price:
punch pos.1	part.-no.	1911601.	add. part.-no. below	price:
PU-spring pos.4	part.-no.	1911604.	add. part.-no. below	price:
ejector pos.5	part.-no.	1911605.	add. part.-no. below	price:
PU-spring pos.6	part.-no.	1911606	no add. part.-no. necessary	price:
die pos.7	part.-no.	1911607.	add. part.-no. below	price:
D = 2,0	add. part.-no.	020.		
D = 3,0	add. part.-no.	030.		
D = 4,0	add. part.-no.	040.		
D = 5,0	add. part.-no.	050.		
D = 6,0	add. part.-no.	060.		
Mild steel	add. part.-no.		ST	
Aluminium	add. part.-no.		AL	
Stainless steel	add. part.-no.		VA	
tool example:	part.-no.	1911600. 030.	AL	

tool complete

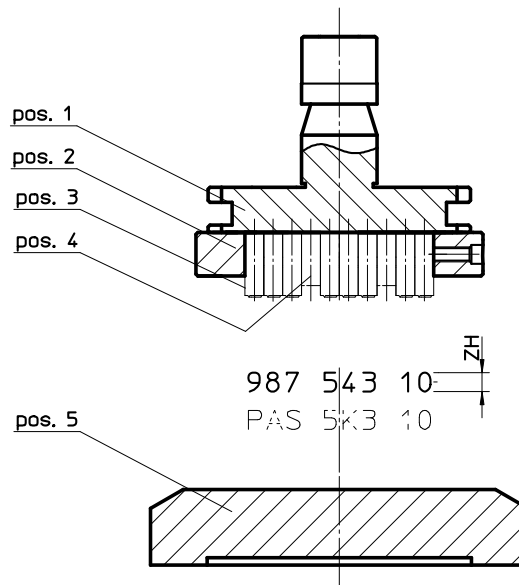
D = 3,0

Aluminium



Am Steinkreuz 2  
D 95473 Creußen  
Phone: + 49 92 70 / 9 85 - 0  
Fax: + 49 92 70 / 9 85 - 99  
E-Mail: info@pass-ag.com  
Internet: www.pass-ag.com

### Letter Marking Tool size II / solid version (V-Line) - downform -



tool complete 1-line pos. 1; 2; 5 (without pos. 3; 4)	part.-no.	1910700.	add. part.-no. below	price:
tool complete 2-lines pos. 1; 2; 5 (without pos. 3; 4)	part.-no.	1910750.	add. part.-no. below	price:
upper part pos. 1	part.-no.	1910701	no add. part.-no. necessary	price:
insert holder plate 1-line pos. 2	part.-no.	1910702.	add. part.-no. below	price:
insert holder plate 2-lines pos. 2	part.-no.	1910752.	add. part.-no. below	price:
letter insert pos. 3	part.-no.	1910703.	add. part.-no. below	price:
blank insert pos. 4	part.-no.	1910704.	add. part.-no. below	price:
flat die pos. 5	part.-no.	1910705	no add. part.-no. necessary	price:
letter height 3 mm (15 pce. in 1 row) "ZH"	add. part.-no.	030.		
letter height 4 mm (12 pce. in 1 row) "ZH"	add. part.-no.	040.		
letter height 5 mm (10 pce. in 1 row) "ZH"	add. part.-no.	050.		
s = 1,0 to 4,0	add. part.-no.	04.		
s = 4,1 to 8,0	add. part.-no.	08.		
letters / numbers (only for pos. 3 necessary)			xxx	
tool example:	part.-no.	1910703. 040. 04.	M	

letter insert  
letter height = 4  
s = 1,0 to 4,0  
letter "M"

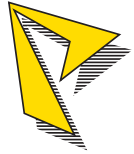
# Catalog 12/05-T

Letter Marking Tool  
- upform

System

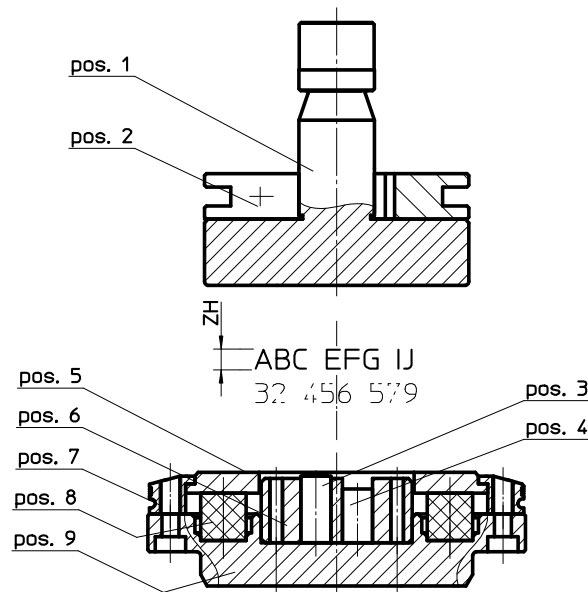
## TRUMPF

### PASS STANZTECHNIK AG



Am Steinkreuz 2  
D 95473 Creußen  
Phone: + 49 92 70 / 9 85 - 0  
Fax: + 49 92 70 / 9 85 - 99  
E-Mail: info@pass-ag.com  
Internet: www.pass-ag.com

### Letter Marking Tool size II / spring-loaded version (V-Line) - upform -



tool complete 1-line pos. 1; 2; 5-9 (without pos. 3; 4)	part.-no.	1910800.	add. part.-no. below	price:
tool complete 2-lines pos. 1; 2; 5-9 (without pos. 3; 4)	part.-no.	1910850.	add. part.-no. below	price:
upper part pos. 1	part.-no.	1910801.	add. part.-no. below	price:
letter insert pos. 3	part.-no.	1910803.	add. part.-no. below	price:
blank insert pos. 4	part.-no.	1910804.	add. part.-no. below	price:
insert holder plate 1-line pos. 6	part.-no.	1910806.	add. part.-no. below	price:
insert holder plate 2-lines pos. 6	part.-no.	1910856.	add. part.-no. below	price:
PU-spring pos. 8	part.-no.	1910808	no add. part.-no. necessary	price:
letter height 3 mm (15 pce. in 1 row) "ZH"	add. part.-no.	030.		
letter height 4 mm (12 pce. in 1 row) "ZH"	add. part.-no.	040.		
letter height 5 mm (10 pce. in 1 row) "ZH"	add. part.-no.	050.		
s = 1,0 to 4,0	add. part.-no.	04.		
s = 4,1 to 8,0	add. part.-no.	08.		
letters / numbers (only for pos. 3 necessary)			xxx	
tool example:	part.-no.	1910800. 050. 04.		

tool complete  
1-line  
letter height = 5  
s = 1,0 to 4,0

# Catalog 12/05-T

Line Marking Tool  
- downform

System

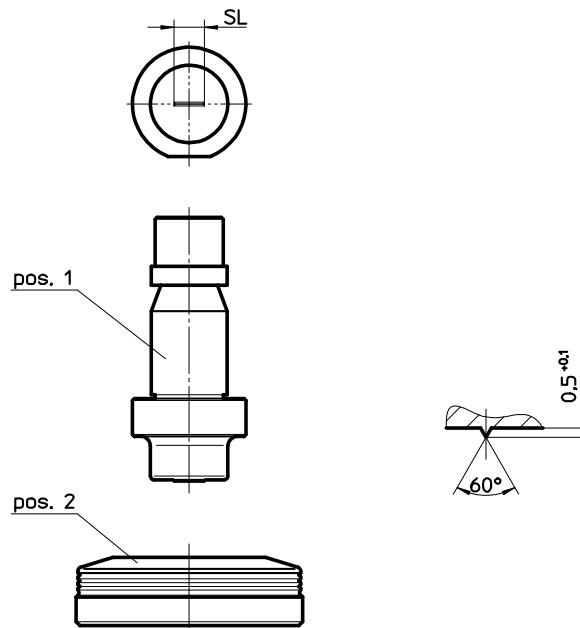
# TRUMPF

## PASS STANZTECHNIK AG



Am Steinkreuz 2  
D 95473 Creußen  
Phone: + 49 92 70 / 9 85 - 0  
Fax: + 49 92 70 / 9 85 - 99  
E-Mail: info@pass-ag.com  
Internet: www.pass-ag.com

### Line Marking Tool size I / solid version (V-Line) - downform -



tool complete pos.1-2	part.-no.	1910300.	add. part.-no. below	price:
marking punch pos. 1	part.-no.	1910301.	add. part.-no. below	price:
flat die pos. 2	part.-no.	1910302	no add. part.-no. necessary	price:
Line length 3 mm "SL"	add. part.-no.	03.		
Line length 4 mm "SL"	add. part.-no.	04.		
Line length 5 mm "SL"	add. part.-no.	05.		
Line length 6 mm "SL"	add. part.-no.	06.		
Line length 8 mm "SL"	add. part.-no.	08.		
Line length 10 mm "SL"	add. part.-no.	10.		
s = 1,0 to 4,0	add. part.-no.	04.		
s = 4,1 to 8,0	add. part.-no.	08.		
Mild steel	add. part.-no.		ST	
Aluminium	add. part.-no.		AL	
Stainless steel	add. part.-no.		VA	
tool example:	part.-no.	1910301.	04. 04.	

marking punch  
Line length = 4  
s = 1,0 to 4,0  
all sheet versions



# Catalog 12/05-T

Letter Marking Tool  
- downform

System

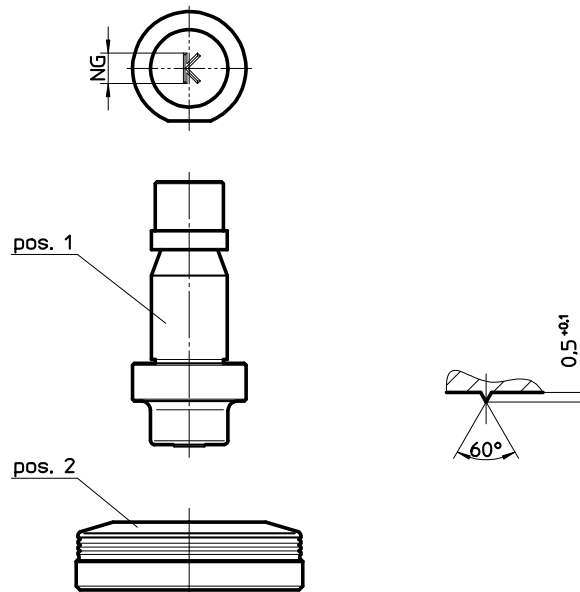
# TRUMPF

## PASS STANZTECHNIK AG



Am Steinkreuz 2  
D 95473 Creußen  
Phone: + 49 92 70 / 9 85 - 0  
Fax: + 49 92 70 / 9 85 - 99  
E-Mail: info@pass-ag.com  
Internet: www.pass-ag.com

### Letter Marking Tool size I / solid version (V-Line) - downform -



tool complete pos. 1-2	part.-no.	1910400.	add. part.-no. below	price:
marking punch pos. 1	part.-no.	1910401.	add. part.-no. below	price:
flat die pos. 2	part.-no.	1910402	no add. part.-no. necessary	price:
number (i.e. 1 "One")	add. part.-no.	1.		
letter (i.e. "K")	add. part.-no.	K.		
size 4 mm "NG"	add. part.-no.	04.		
size 5 mm "NG"	add. part.-no.	05.		
size 6 mm "NG"	add. part.-no.	06.		
size 8 mm "NG"	add. part.-no.	08.		
size 10 mm "NG"	add. part.-no.	10.		
size 12 mm "NG"	add. part.-no.	12.		
s = 1,0 to 4,0	add. part.-no.	04.		
s = 4,1 to 8,0	add. part.-no.	08.		
Mild steel	add. part.-no.	ST		
Aluminium	add. part.-no.	AL		
Stainless steel	add. part.-no.	VA		
tool example:	part.-no.	1910400. F. 08. 04.		

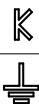
tool complete

letter "F"

size = 8

s = 1,0 to 4,0

all sheet versions



Catalog 12/05-T  
Ground Symbol Marking Tool  
- downform

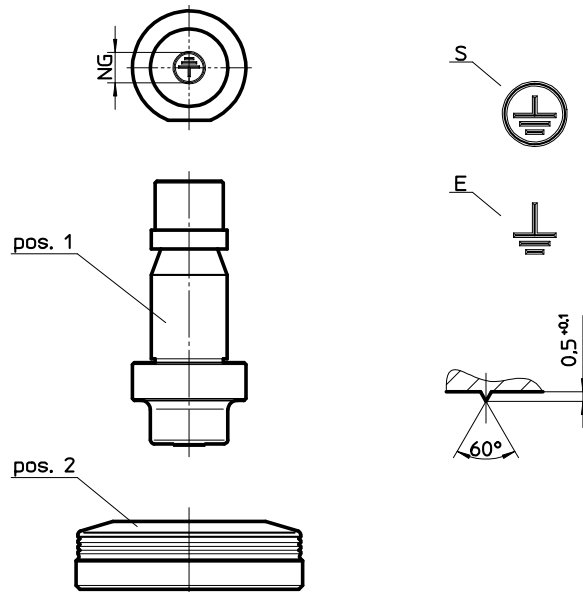
System  
**TRUMPF**

**PASS STANZTECHNIK AG**



Am Steinkreuz 2  
D 95473 Creußen  
Phone: + 49 92 70 / 9 85 - 0  
Fax: + 49 92 70 / 9 85 - 99  
E-Mail: info@pass-ag.com  
Internet: www.pass-ag.com

**Ground Symbol Marking Tool size I / solid version (V-Line)  
- downform -**



tool complete pos. 1-2	part.-no.	1910500.	add. part.-no. below	price:
marking punch pos. 1	part.-no.	1910501.	add. part.-no. below	price:
flat die pos. 2	part.-no.	1910502	no add. part.-no. necessary	price:
ground symbol "E"	add. part.-no.	E.		
ground symbol "S"	add. part.-no.	S.		
size 4 mm "NG"	add. part.-no.	04.		
size 5 mm "NG"	add. part.-no.	05.		
size 6 mm "NG"	add. part.-no.	06.		
size 8 mm "NG"	add. part.-no.	08.		
size 10 mm "NG"	add. part.-no.	10.		
size 12 mm "NG"	add. part.-no.	12.		
s = 1,0 to 4,0	add. part.-no.	04.		
s = 4,1 to 8,0	add. part.-no.	08.		
Mild steel	add. part.-no.	ST		
Aluminium	add. part.-no.	AL		
Stainless steel	add. part.-no.	VA		
tool example:	part.-no.	1910500. E. 08. 04.		

tool complete

ground symbol "E"

size = 8

s = 1,0 to 4,0

all sheet versions

# Catalog 12/05-T

Ground Symbol Marking Tool  
- upform

System

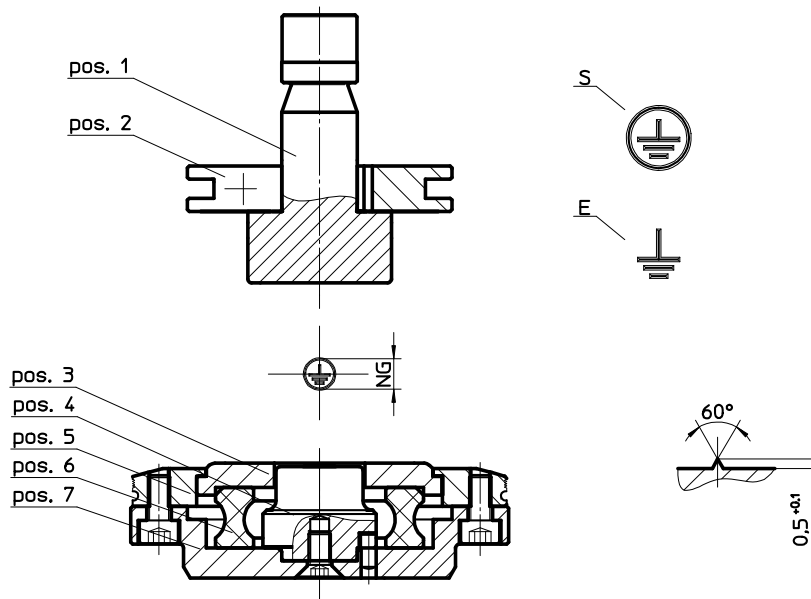
## TRUMPF

### PASS STANZTECHNIK AG



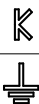
Am Steinkreuz 2  
D 95473 Creußen  
Phone: + 49 92 70 / 9 85 - 0  
Fax: + 49 92 70 / 9 85 - 99  
E-Mail: info@pass-ag.com  
Internet: www.pass-ag.com

#### Ground Symbol Marking Tool size II / spring-loaded version (V-Line) - upform -



tool complete pos. 1-7	part.-no.	1910600.	add. part.-no. below	price:
flat upper part pos. 1	part.-no.	1910601.	add. part.-no. below	price:
punch insert pos. 4	part.-no.	1910604.	add. part.-no. below	price:
PU-spring pos. 6	part.-no.	1910606	no add. part.-no. necessary	price:
ground symbol "E"	add. part.-no.	E.		
ground symbol "S"	add. part.-no.	S.		
size 4 mm "NG"	add. part.-no.	04.		
size 5 mm "NG"	add. part.-no.	05.		
size 6 mm "NG"	add. part.-no.	06.		
size 8 mm "NG"	add. part.-no.	08.		
size 10 mm "NG"	add. part.-no.	10.		
size 12 mm "NG"	add. part.-no.	12.		
s = 1,0 to 4,0	add. part.-no.	04.		
s = 4,1 to 8,0	add. part.-no.	08.		
Mild steel	add. part.-no.	ST		
Aluminium	add. part.-no.	AL		
Stainless steel	add. part.-no.	VA		
tool example:	part.-no.	1910604.	S. 12. 04. ST	

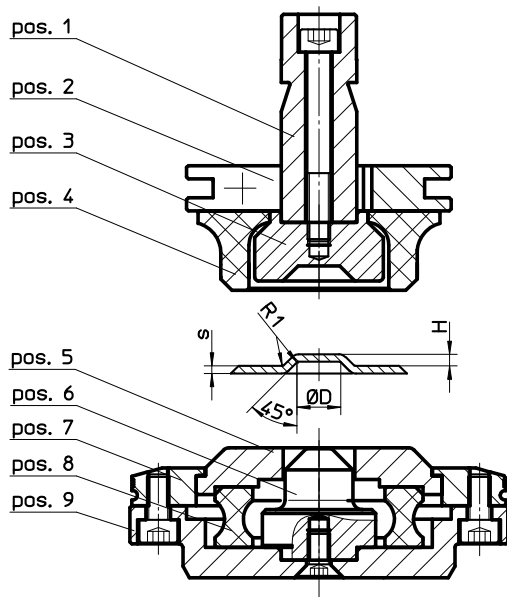
punch insert  
ground symbol "S"  
size 12  
s = 1,0 to 4,0  
Mild steel



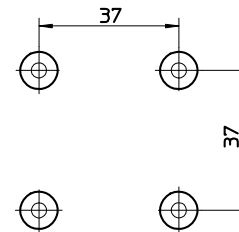


Am Steinkreuz 2  
D 95473 Creußen  
Phone: + 49 92 70 / 9 85 - 0  
Fax: + 49 92 70 / 9 85 - 99  
E-Mail: info@pass-ag.com  
Internet: www.pass-ag.com

### Round Emboss Tool size II / spring-loaded version - upform -



minimum steps  
with standard-version



tool complete pos. 1-9	part.-no.	1911900.	add. part.-no. below	price:
die insert pos. 3	part.-no.	1911903.	add. part.-no. below	price:
PU-spring pos. 4	part.-no.	1911904.	add. part.-no. below	price:
stripper pos.5	part.-no.	1911905.	add. part.-no. below	price:
punch insert pos. 6	part.-no.	1911906.	add. part.-no. below	price:
PU-spring pos. 8	part.-no.	1911908	no add. part.-no. necessary	price:
D = 12	add. part.-no.	12.		
D = 20	add. part.-no.	20.		
D = 30	add. part.-no.	30.		
H = 2,0	add. part.-no.	020.		
H = 3,0	add. part.-no.	030.		
H = 4,0	add. part.-no.	040.		
H = 5,0	add. part.-no.	050.		
s = 0,8	add. part.-no.	08.		
s = 1,0	add. part.-no.	10.		
s = 1,5	add. part.-no.	15.		
s = 2,0	add. part.-no.	20.		
s = 2,5	add. part.-no.	25.		
s = 3,0	add. part.-no.	30.		
Mild steel	add. part.-no.		ST	
Aluminium	add. part.-no.		AL	
Stainless steel	add. part.-no.		VA	
tool example:	part.-no.	1911900.	20. 020. 10. VA	

tool complete  
D = 20  
H = 2,0  
s = 1,0  
Stainless steel

# Catalog 12/05-T

Round Emboss Tool  
- downform

System

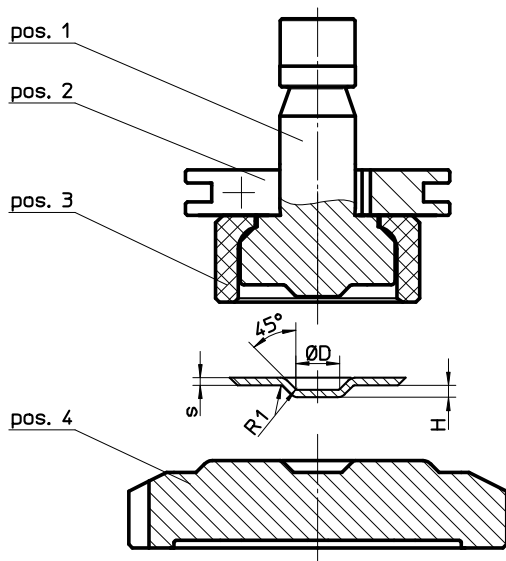
## TRUMPF

# PASS STANZTECHNIK AG

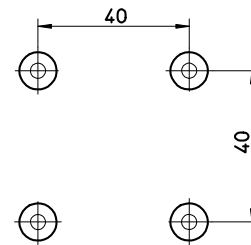


Am Steinkreuz 2  
D 95473 Creußen  
Phone: + 49 92 70 / 9 85 - 0  
Fax: + 49 92 70 / 9 85 - 99  
E-Mail: info@pass-ag.com  
Internet: www.pass-ag.com

### Round Emboss Tool size II / solid version - downform -



minimum steps  
with standard-version



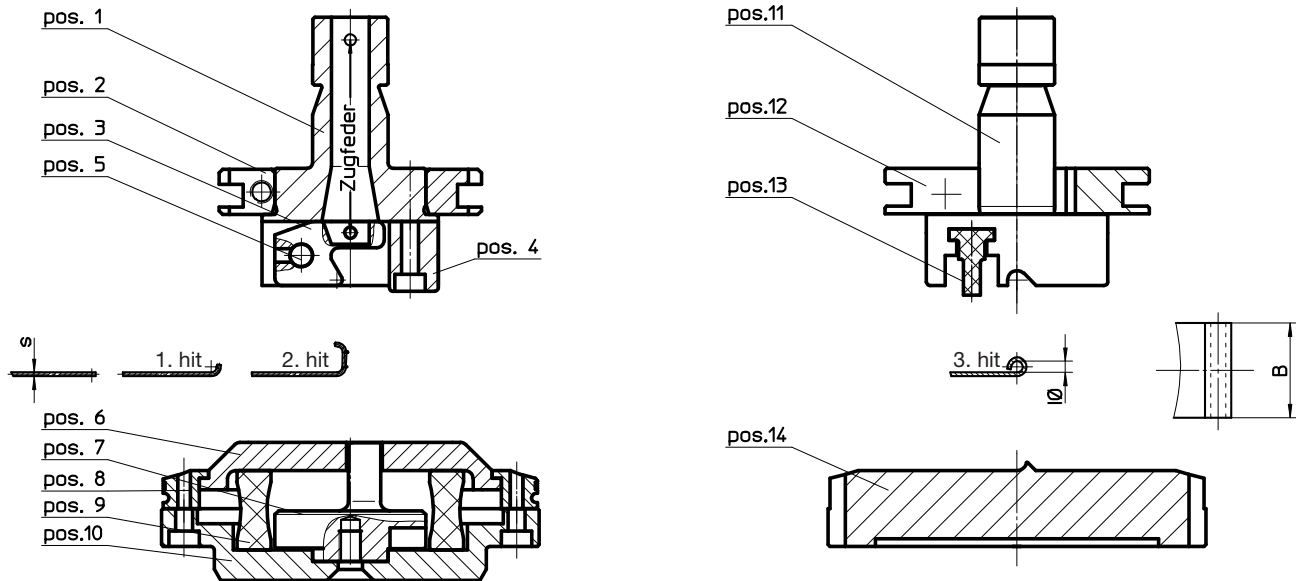
tool complete pos. 1-4	part.-no.	1912000.	add. part.-no. below	price:
punch pos. 1	part.-no.	1912001.	add. part.-no. below	price:
PU-spring pos. 3	part.-no.	1912003.	add. part.-no. below	price:
die pos. 4	part.-no.	1912004.	add. part.-no. below	price:
D = 12	add. part.-no.	12.		
D = 20	add. part.-no.	20.		
D = 30	add. part.-no.	30.		
H = 2,0	add. part.-no.	020.		
H = 3,0	add. part.-no.	030.		
H = 4,0	add. part.-no.	040.		
H = 5,0	add. part.-no.	050.		
s = 0,8	add. part.-no.	08.		
s = 1,0	add. part.-no.	10.		
s = 1,5	add. part.-no.	15.		
s = 2,0	add. part.-no.	20.		
s = 2,5	add. part.-no.	25.		
s = 3,0	add. part.-no.	30.		
Mild steel	add. part.-no.		ST	
Aluminium	add. part.-no.		AL	
Stainless steel	add. part.-no.		VA	
tool example:	part.-no.	1912001.	30. 040. 20.	AL

punch  
D = 30  
H = 4,0  
s = 2,0  
Aluminium



Am Steinkreuz 2  
D 95473 Creußen  
Phone: + 49 92 70 / 9 85 - 0  
Fax: + 49 92 70 / 9 85 - 99  
E-Mail: info@pass-ag.com  
Internet: www.pass-ag.com

### Hinge Tool Set size II / spring-loaded and solid version - upform -

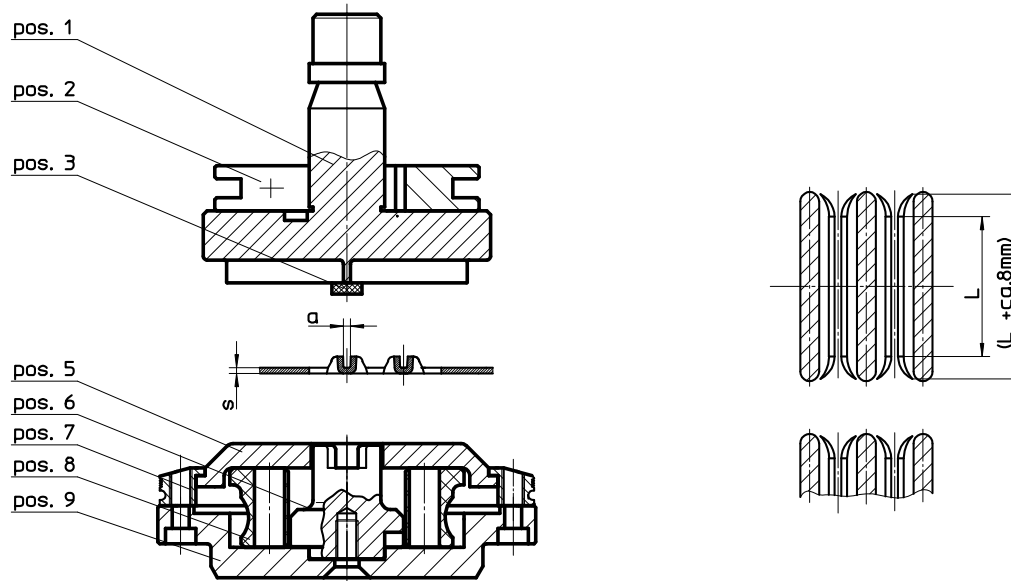


tool set complete 1-14	part.-no.	1913000.	add. part.-no. below	price:
tool compl. (pre forming) 1-10	part.-no.	191300A.	add. part.-no. below	price:
lever pos. 3	part.-no.	1913003.	add. part.-no. below	price:
spring	part.-no.	19130FA	no add. part.-no. necessary	price:
tool compl. (post forming) 11-14	part.-no.	191300B.	add. part.-no. below	price:
PU-spring pos. 13	part.-no.	1913013	add. part.-no. below	price:
hinge diameter Ø 3,0	add. part.-no.	030.		
hinge diameter Ø 4,0	add. part.-no.	040.		
hinge diameter Ø 4,5	add. part.-no.	045.		
hinge diameter Ø 5,0	add. part.-no.	050.		
hinge diameter Ø 5,5	add. part.-no.	055.		
hinge diameter Ø 6,0	add. part.-no.	060.		
hinge length 20,0 "B"	add. part.-no.	20.		
hinge length 30,0 "B"	add. part.-no.	30.		
hinge length 40,0 "B"	add. part.-no.	40.		
s = 0,5	add. part.-no.	05.		
s = 0,8	add. part.-no.	08.		
s = 1,0	add. part.-no.	10.		
s = 1,2	add. part.-no.	12.		
s = 1,5	add. part.-no.	15.		
Mild steel	add. part.-no.		ST	
Aluminium	add. part.-no.		AL	
Stainless steel	add. part.-no.		VA	
tool example:	part.-no.	1913000. 050. 30. 10.	ST	

tool set complete  
hinge-  
Ø = 5,0  
hinge  
length = 30  
s = 1,0  
Mild steel



### Card Guide Tool size II / spring-loaded version - upform -



tool complete 1-9	part.-no.	1913100.	add. part.-no. below	price:
upper die pos.1	part.-no.	1913101.	add. part.-no. below	price:
PU-springs pos.3	part.-no.	1913103.	add. part.-no. below	price:
stripper pos.5	part.-no.	1913105.	add. part.-no. below	price:
punch insert pos.6	part.-no.	1913106.	add. part.-no. below	price:
PU-spring pos.8	part.-no.	1913108	no add. part.-no. necessary	price:
guide width 2,0 "a"	add. part.-no.	020.		
guide width 2,5 "a"	add. part.-no.	025.		
guide width 3,0 "a"	add. part.-no.	030.		
guide width 3,5 "a"	add. part.-no.	035.		
guide width 4,0 "a"	add. part.-no.	040.		
guide width 5,0 "a"	add. part.-no.	050.		
guide length = 30,0 "L"	add. part.-no.	30.		
guide length = 40,0 "L"	add. part.-no.	40.		
guide length = 50,0 "L"	add. part.-no.	50.		
s = 0,5	add. part.-no.	05.		
s = 0,8	add. part.-no.	08.		
s = 1,0	add. part.-no.	10.		
s = 1,2	add. part.-no.	12.		
s = 1,5	add. part.-no.	15.		
Mild steel	add. part.-no.		ST	
Aluminium	add. part.-no.		AL	
Stainless steel	add. part.-no.		VA	
tool example:	part.-no.	1913100. 030. 40. 10.	ST	

tool complete  
guide width = 3,0  
guide length = 40  
s = 1,0  
Mild steel

